



TECON COMPANY PROFILE

The Leading
Formwork Brand
From China

FORMWORK
&
SCAFFOLDING

TECON
COMPANY
PROFILE

Contents

About TECON	1
Organizational Structure	3
Our History	5
Fabrication Bases	7
Quality Control	9
Test Report	13
Our Clients	14
Services	15
Wall Formwork	
BASE 20 Formwork	21
HETO Frame Formwork	22
Alumi Frame Formwork	23
Modular Formwork	
Plastic Formwork TP60	24
Slab Formwork	
Slab Flex 20 Formwork	25
Slab Table Formwork	26
Alu-Flex Formwork	27
Aludeck Formwork	28

Column Formwork

Adjustable HETO Frame Column Formwork	29
Adjustable Plastic Column Formwork TP60	30
Round Column Formwork	31

Special Formwork

Single Side Wall Formwork SSF	32
Climbing Formwork CB180/240	33
Dam Formwork DB180/240	34
Multi-function Climbing Formwork MB180	35
Self-climbing Formwork TSC50 & TSC100	36

Façade Protection System

Self-climbing Protection Screen	37
Self-climbing Platform SCP	38

Components

H20 Timber Beam	39
Aluminium Beam	40
TECON-Form Shuttering	41
Shoring Props	42

Scaffolding

Ringlock Scaffolding	43
Shoring Tower TST60	44

Project Cases

45



Company Profile

As one of the leading specialists in formwork and scaffolding engineering, our wide range of off-the-shelf and customized products ensure that we can provide solutions for your construction projects, regardless of size or location.

We founded TECON in 2013 with its head office in Suzhou, China. With the expertise of our Research and Development team, having members of our technical team on-site to help you when necessary and knowing that our solutions are always cost-efficient, you can be confident that from the first contact to construction completion, we are always there to support you.



Vision

To be the leading formwork brand from China

Mission

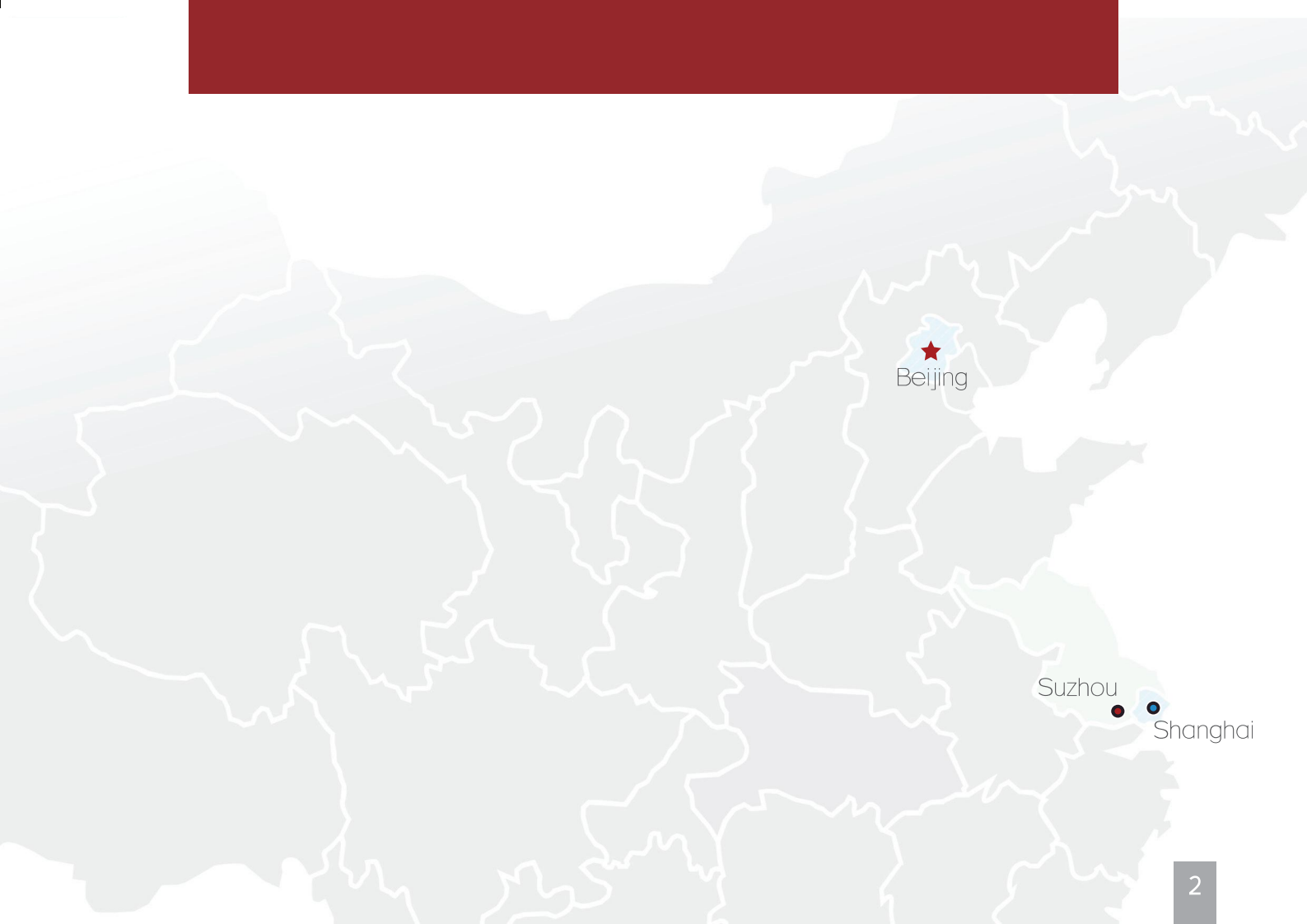
Better formwork,
Better service

Value

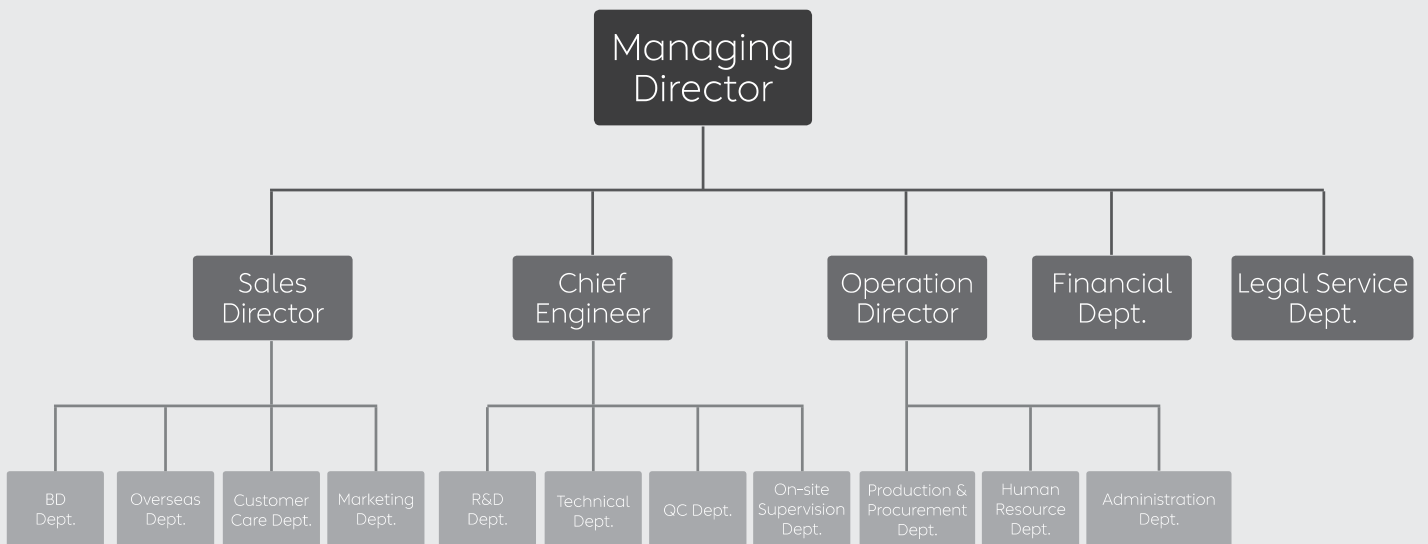
Always strive to make great contribution with
continuous perseverance and efforts

“

"In the past 20 years, formwork industry in China developed very slowly, we found that few professional suppliers in China can truly bring great satisfaction to overseas project sites, especially compared with some international formwork brands. Therefore, we build TECON, dedicate to the field of formwork and scaffolding engineering, with the vision of becoming the leading formwork brand from China, and striving to provide customers with the most competitive system" said by Edgar Zhou, the main founder of TECON in 2013.



Organizational Structure





Our History



Establishment in middle November.



New office launches in LEFO commercial centre, Suzhou; Win the 3 million us dollar Multi-purpose climbing formwork tender with Taiwan partner, offered our customer site complete engineering service and supervision.

2013

2014

2016

2017

Annual sales amount reaches 1 million us dollars after the first-year operation.



Win the formwork tender of ITC Colombo One Hotel & Residences and Queens Peak in Singapore.





TECON finally initiate cooperation with one leading European formwork brand after factory audit and their yard test in Germany.



Moved into new offices and built a new sample room; Sales peaked since Tecon was founded.

2018

2019

2020

2021

The 3rd time attendance in World of Concrete exhibition, Las Vegas . This year, TECON has participated in five international concrete exhibitions worldwide and served more than 60 project sites with our material and know-how.



Preparing for establishing subsidiaries in Malaysia.





Fabrication Bases





Quality Control



TECON is committed to creating a professional, safe, and reliable formwork brand from China. We take product quality as our action principle and control the quality from all aspects. In TECON, quality is not only our slogan, but also the reputation among the customers. We are well aware that only by ensuring the quality of each component, can we ensure the reliable and safe performance of the whole formwork system on customer site, from a single piece of tie rod to a set of climbing bracket. We hope through our efforts in quality control, TECON could be a symbol of Reliability and Safety.

Standards

In the process of product research and development, production and processing, our team introduced international standards such as European standard (EN1065 / EN13377), Australian standard (AS3610), and Chinese standard (GB) as the implementation standards, and transformed them into higher requirements of as enterprise standard.



QC Team

We established a professional QC team and adopt high-precision measuring instruments. TECON QC team as the executor of enterprise standards and the gatekeeper of the quality, we are constantly learning the advanced concept and skill and put them into use in our factories. We also help our suppliers to improve their production and QC management ability.

From raw material certification to the inspection of the tooling platform, and the measurement of the first component, we ensure that the product meet our standards and the requirement of site application before starting mass production.



Pre-assembly Test

For some complicated system with different components, we will conduct the pre-assembly test in our factory yard in order to ensure the assembly of our products must be smooth and complete after they arrive at the customer project site.

Laboratory Test

For some key components, we will conduct internal tests first, and then send them to an internationally recognized third-party institution such as TUV and SGS for experimental tests, and issue professional test reports or certifications.

Test Report & Certificate

SGS TEST REPORT

No.: SHCX160602001
Date: Jun. 05, 2016
Page: 1 of 4

BUKOU TECON CONSTRUCTION TECHNOLOGY CO., LTD.
ROOM 1108-1109, BLOCK A, BUILDING 2, LEFO COMMERCIAL CENTER, WUZHONG DISTRICT, SUZHOU

The following sample(s) were submitted and identified on behalf of the client as:

Sample Name: READY CUTTY STEEL PROF
Sample Number: SHCX160602001
Test Requested: Failure mode
Test Method: EN 1065:2008 EN 1088:2008 and client's requirement
Test Standard: EN 1065:2008, EN 1088:2008 and client's requirement
Product specification: 8.0/7.0mm, 10% Event, 200mm-400mm
Buyer: All First General Contracting
Project location: Room 1108-1109, Block A, Building 2, LEFO COMMERCIAL CENTER
Date of Receipt: Jun. 01, 2016
Test Period: Jun. 01, 2016 to Jun. 05, 2016
Test result(s): For further details, please refer to the following report(s)

Signed by: SGS-CSTC Standards Technical Services (Shanghai) Co., Ltd.
Signature: [Signature]
Title: Authorized signatory
The number of General Conditions of Service in the application form shall be checked in this report

SGS 517874

TECON Protokoll

Germany test for plastic formwork TP60 Plus

Wandschalbe Betonage am 05.12.2018

- Bezeichnung der verwendeten Elemente: Tecon TP60 Plus mit Fußankerlösung
- Elementabmessungen: 120 x 60 Eingeschalt Zustand

Zusätzlich zum Aufbau im Vergleich zur Betonage am 22.11.2018 werden Fußankerlöcher hinzugefügt.



2021 PROUD MEMBER

SAIA

SCAFFOLD & ACCESS INDUSTRY ASSOCIATION

WWW.SAIAONLINE.ORG

实用新型专利证书

实用新型名称: 一种异形支撑架

发明人: 阮仁军, 潘海刚, 周海清

专利号: 2019 2 080986.3

专利申请日: 2019 年 06 月 14 日

专利权人: 苏州拓恒建筑科技有限公司

地址: 215000 江苏省苏州市工业园区中环路1188号1108-1109室

授权公告日: 2020 年 03 月 27 日 授权公告号: CN 2019102227 3

说明书全文可以在国家知识产权局网站上查看。欲查看说明书、摘要及权利要求书全文者请在国家知识产权局专利检索系统中检索, 专利检索系统网址: 专利检索系统, 专利检索系统网址: 专利检索系统

专利权人姓名(名称): 苏州拓恒建筑科技有限公司 专利权种类别: 实用新型, 发明, 外观设计, 实用新型和外观设计

局长: [Signature]
副局长: [Signature]

第 1 页, 共 2 页

Certificate of Conformity

EUROPEAN COMMUNITY - CERTIFICATE OF CONFORMITY

CERTIFICATE NO.: HGR160624001

Applicant Name: Suzhou TECON Construction Technology Co., Ltd.
Applicant Address: Room 1108-1109, Block A, Building 2, LEFO Commercial Center, WUZHONG DISTRICT, SUZHOU
Manufacturer Name: Suzhou TECON Construction Technology Co., Ltd.
Manufacturer Address: Room 1108-1109, Block A, Building 2, LEFO Commercial Center, WUZHONG DISTRICT, SUZHOU
Product Name: TECON SHS Formwork System, Clay Flex 20 Formwork & Sash Table Formwork
Model: 800 Timber beams, TECON Roof prop TEP100, TECON Form Hardware 2mm, Fußankerlöcher 2mm
Reports No.: HGR160602001, HGR160602002

BASED ON THE INFORMATION PROVIDED BY THE APPLICANT AND THE INFORMATION OBTAINED BY THE CERTIFYING BODY, THE CERTIFICATE IS VALID FOR THE EQUIPMENT AND CONFIGURATION DESCRIBED AND IN ACCORDANCE WITH THE TEST CASE DETAILED ABOVE.

CONCLUSION OF ASSESSMENT: Based on the information provided and the information obtained by the certifying body, the requirements of the relevant standards. The manufacturer is responsible for confirming the product and ensuring that all manufactured products are in compliance with the specifications detailed in the certificate.

Certificate issued August 5, 2016
Place: Suzhou
Signatures: [Signature]

CE

实用新型专利证书

实用新型名称: 一种异形支撑架

发明人: 阮仁军, 潘海刚, 周海清

专利号: 2019 2 080986.3

专利申请日: 2019 年 06 月 14 日

专利权人: 苏州拓恒建筑科技有限公司

地址: 215000 江苏省苏州市工业园区中环路1188号1108-1109室

授权公告日: 2020 年 03 月 27 日 授权公告号: CN 2019102227 3

说明书全文可以在国家知识产权局网站上查看。欲查看说明书、摘要及权利要求书全文者请在国家知识产权局专利检索系统中检索, 专利检索系统网址: 专利检索系统, 专利检索系统网址: 专利检索系统

专利权人姓名(名称): 苏州拓恒建筑科技有限公司 专利权种类别: 实用新型, 发明, 外观设计, 实用新型和外观设计

局长: [Signature]
副局长: [Signature]

第 1 页, 共 2 页

TÜV Rheinland (Shanghai) Co., Ltd.

Member of TÜV Rheinland Group

Test Report No. Q1 220 CHNVT-2005147

Page 2 of 2

1. Sample information (provided by customer):

Sample name: TST 60


Sample description: A set of TST 60 (4m high)

Sample obtaining method: Sampling by customer Sampling by TÜV staff Other ()

Other information:

Qualified components	Actual and Allow. (kg)	Number of components in set (each 1kg 1kg)	The weight of test bag (kg)
Main frame (4 x 1m beams)	26.34	12	
Universal support cross (L-20 Steel)	4.20	13	
Connection element	1.50	18	441.8
Product safety cables	6.50	32	
Stowjack lock head B	0.25	4	
Stowjack lock head B	10.04	4	

Sample photo(s):



SGS TEST REPORT

No.: SHW160218FCOM41
Date: May 26, 2019
Page: 1 of 7

CUSTOMER NAME: SUZHOU TECON CONSTRUCTION TECHNOLOGY CO., LTD.
ADDRESS: ROOM 1108-1109, BLOCK A, BUILDING 2, LEFO COMMERCIAL CENTER, WUZHONG DISTRICT, SUZHOU

This Report supersedes the Report No. SHW160218FCOM dated May 17, 2019 issued by SGS, original report can be found here:

Sample Name: TSP300
Product specification: 1000-3000
Material and Mass: Aluminium 6061-T6

Below information is completely reviewed and confirmed by the client. SGS, however, assumes no responsibility to verify the accuracy, adequacy and completeness of the sample information provided by client.

Test Method: Failure Load Test
Test Requested: V88-reference EN 1065:1998 and client requirement
Test Method: EN 1065:1998 and client requirement
Date of Receipt: May 05, 2019
Testing Start Date: May 05, 2019
Testing End Date: May 16, 2019
Test result(s): For further details, please refer to the following report(s)
Cross references about the results shown in this test report refer only to the referenced report(s)

Signed by: SGS-CSTC Standards Technical Services (Shanghai) Co., Ltd.
Signature: [Signature]
Title: Authorized signatory

BOARD FOR PROFESSIONAL ENGINEERS, LAND SURVEYORS, AND GEOLOGISTS

This Is To Certify That Pursuant To The Provisions of Chapter 7, Division 3 of The Business and Professions Code

Ron Bar Chen

IS DULY LICENSED AS A PROFESSIONAL ENGINEER IN CIVIL ENGINEERING In The State of California and is Entitled To All The Rights and Privileges Conferred In Said Code.

WITNESS OUR HAND AND SEAL
Certificate No C 78952
This 28th day of December, 2011, at Sacramento, California.
BOARD FOR PROFESSIONAL ENGINEERS, LAND SURVEYORS, AND GEOLOGISTS

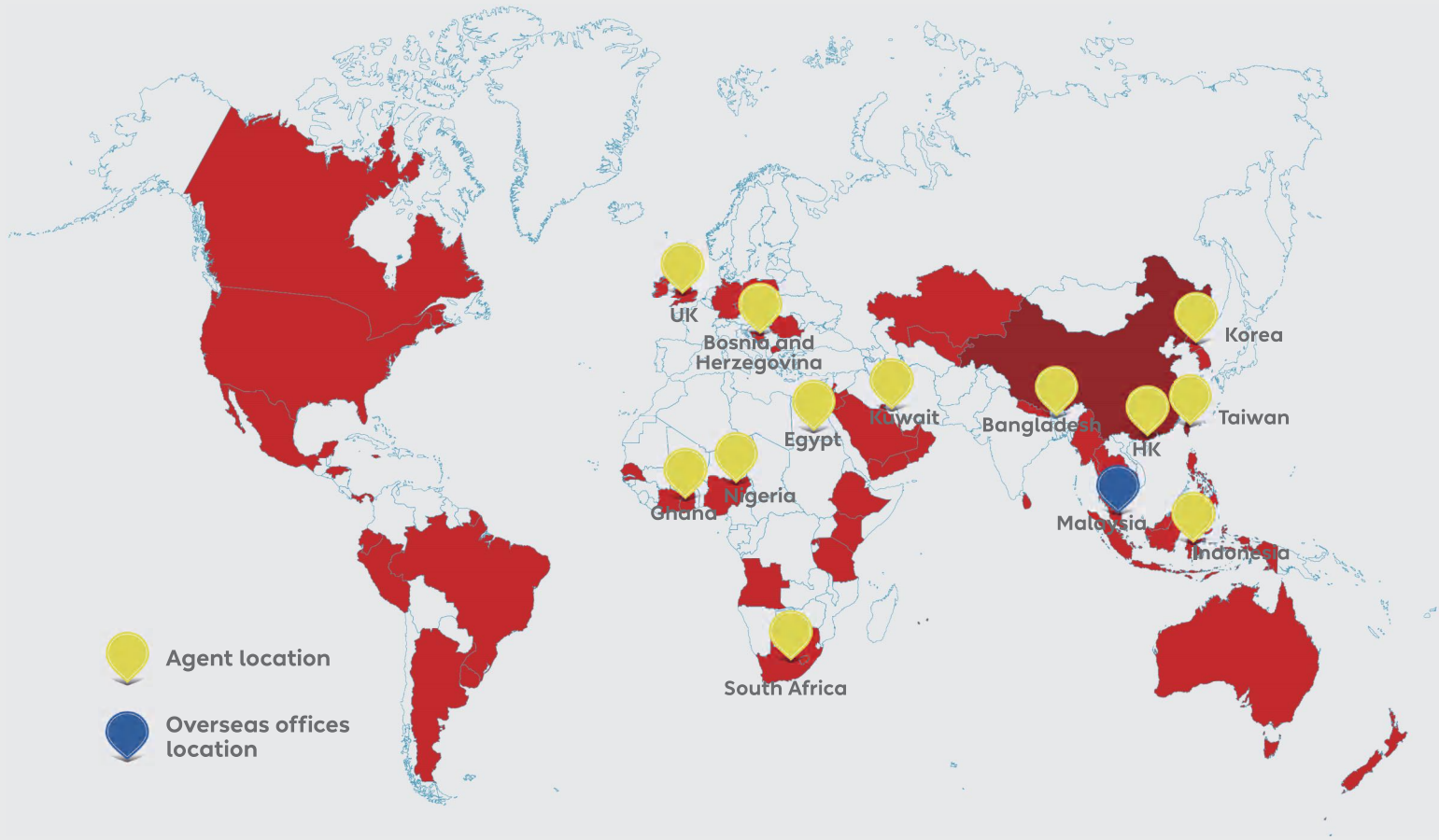
[Signature] Executive Officer
[Signature] President

中国模板脚手架协会会员证书

证书编号: 304621211707

经审议批准 苏州拓恒建筑科技有限公司 为中国模板脚手架协会会员单位 特发此证

有效期(三)年 二〇二一年五月二十八日



America

US.
Panama
Canada
Honduras
Mexico
Jamaica
Uruguay
Belize

Argentina
Dominica
Guatemala
Brazil
Peru
Ecuador
Chile

Africa

Nigeria
Senegal
Kenya
Mauritius
Ghana

South Africa
Ethiopia
Rwanda
Tanzania
Angola

Asia

Philippines
Bangladesh
Saudi Arabia
Malaysia
Indonesia

UAE
Thailand
Sri Lanka
Yemen
Cambodia

Myanmar
Israel
Vietnam

Europe

Germany
Malta
UK
Czech Republic
French Reunion
Poland

Slovakia
Bosnia and Herzegovina
Romania
Macedonia

Oceania

Australia
New Zealand

Our Clients

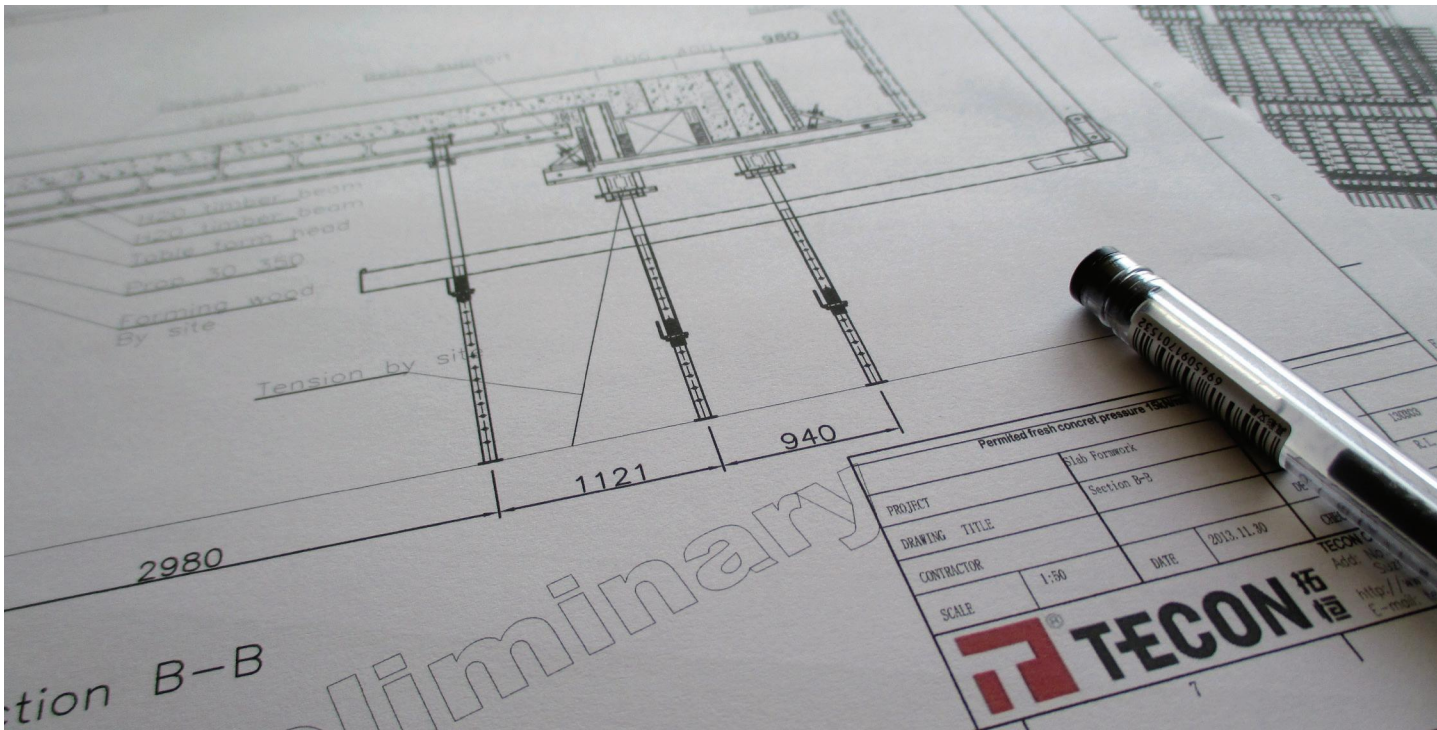
Services

TECON is more than a manufacturer or supplier of formwork and scaffolding, we are experienced designers, engineers, sales specialists and project managers who can offer you a wide range of services to support your construction projects.



Consultancy

As you start planning your project, you can contact us and learn more about the wide range of our products. We can give you product recommendation based on your requirements and help you evaluate different solutions including system advantage and disadvantages, cost, site efficiency ect.. To make the most suitable decision considering all aspects, we will provide you with a customized consultancy service with our know-how, for free.



Technical Planning

Whether you are working on the formwork budget for a tender or looking for a detailed proposal before purchasing, our technicians can assist you with their experience and expertise in formwork & scaffolding planning by AUTO-CAD or even 3d software.

Whatever your project or requirement is, we will be able to find the right solution for you.

Send us your request with structural drawings via email and our technicians will have a professional proposal with preliminary drawings within the week. Load calculations are available if needed for local consultant approval.



Order Delivery

TECON Customer Care Dept. is responsible for the order update and fulfillment, from production to delivery.

During production, we will share the fabrication schedule and QC process with corresponding photos and videos. After production completion, we will also record the package and loading by camera, and then submit photos to our customers for reference.

Before shipping products, we ensure that products and materials are properly packed according to their size and weight and meet the requirements for sea transport and Incoterms 2010 as mandatory. The vessel name, container number and ETA are all included in the shipping advice and will be transmitted to our customer. Full shipping documents will be sent to you by courier or tele-released upon request.





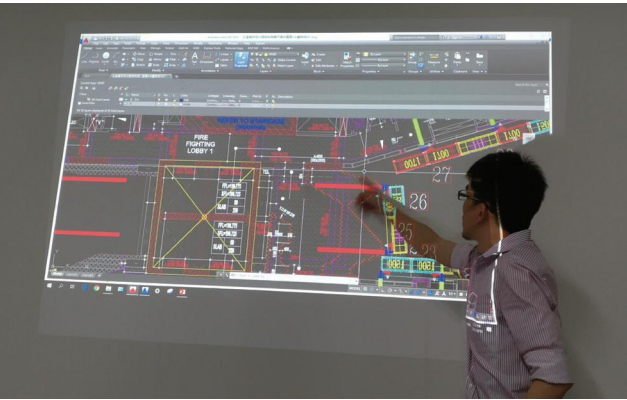
Warranty Policy

All TECON materials are designed and produced according to relevant standards such as EN1065, EN13377 etc., as well as TECON internal standard strictly. Safety factors have already been considered during the engineering stage. In addition to these guarantees, the TECON QC team execute higher quality control standards compared to others.

In case of receipt or under suitable / appropriate conditions if TECON materials get broken or major and critical defect, we will:

- 01) deliver the replacement for the same, or
- 02) refund corresponding amount and loss as compensation to our customers, or
- 03) send our technician to your site for maintenance.

In such cases, TECON would examine the material and would assess if it is site contractor / personnel fault or TECON material problem using relevant data such as brief report, photos, video from contractors. If our site supervisor is on the site during such period, we will also do the survey as another reference source. This clause is valid for 12 months from the date the contractor has received the materials.



On-site Supervision

Before TECON products arrive at your site, a well-prepared shop drawing & assembly drawing will be submitted for further proceedings together with user manual. All these profiles have sufficient information and images for your site training and guidance. However, if you are a beginner with TECON formwork & scaffolding product or you are looking to optimize the use of our systems, our supervisor will be ready to fly to your site to provide professional assistance, training & inspection based on your request.



TECON

PRODUCT

LINE

BASE 20

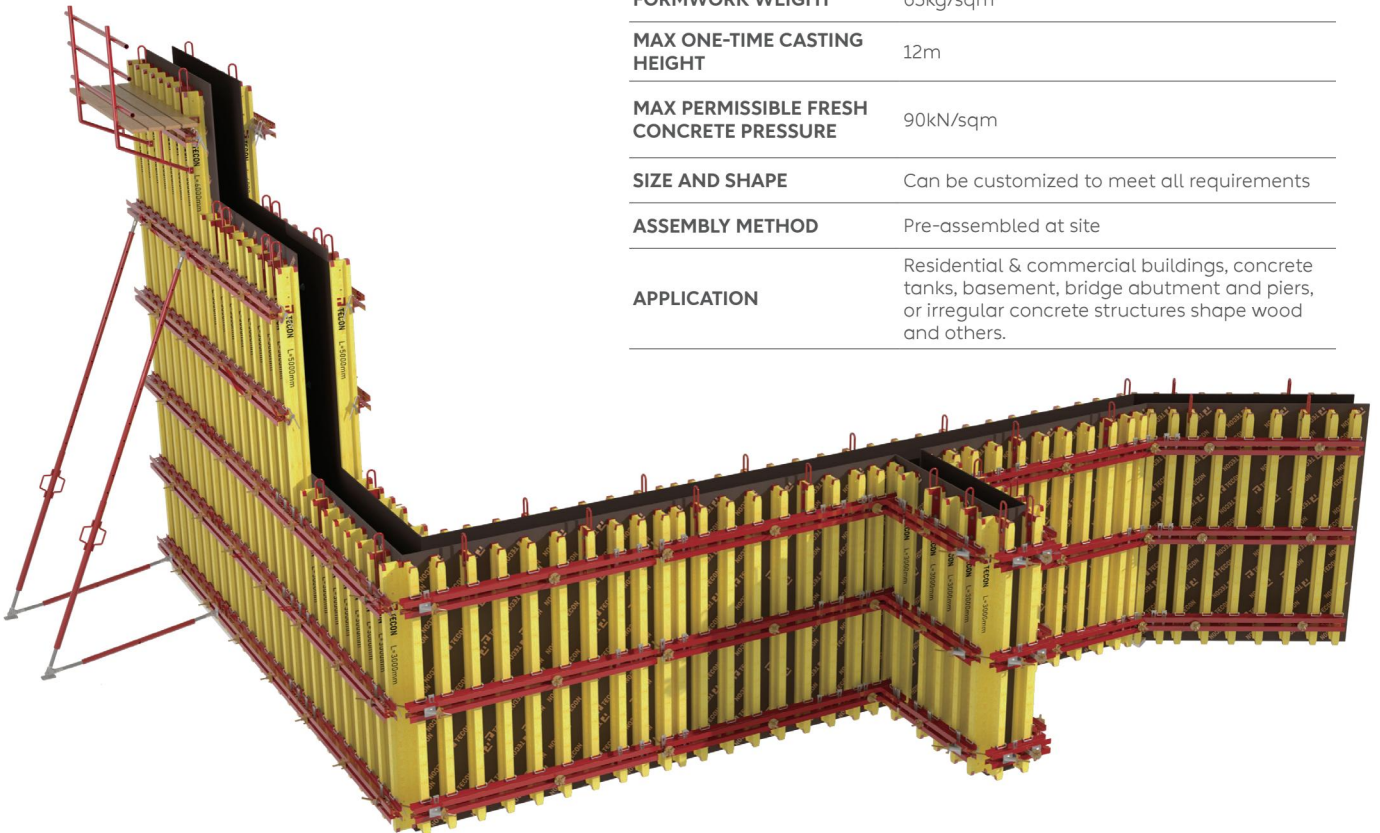
FORMWORK

CUSTOMIZED AND WIDELY USED TIMBER BEAM FORMWORK FOR ALL SIZES AND SHAPES VERTICAL STRUCTURE

TECON BASE 20 Wall Formwork is a universal wall formwork which is dedicated to suit all sizes and shapes of walls. It is consisted of TECON-Form plywood, H20 timber beam, steel waler and other accessories. Those independent components can be freely assembled.

- **Efficient on-site due to pre-assembled big size formwork panels under crane assistance**
- **Easily achieve fair-faced concrete finishing for architectural purpose by high quality plywood, few tie rods and joints**
- **Suitable for all size and shape requirements due to flexible arrangement of girders and walers**

MAIN COMPONENTS	18/21mm TECON-Form birch plywood, H20 timber beam, steel waler.
FORMWORK WEIGHT	65kg/sqm
MAX ONE-TIME CASTING HEIGHT	12m
MAX PERMISSIBLE FRESH CONCRETE PRESSURE	90kN/sqm
SIZE AND SHAPE	Can be customized to meet all requirements
ASSEMBLY METHOD	Pre-assembled at site
APPLICATION	Residential & commercial buildings, concrete tanks, basement, bridge abutment and piers, or irregular concrete structures shape wood and others.





HETO FRAME FORMWORK

EFFICIENT AND DURABLE STEEL FRAME PANEL SYSTEM FOR WALL WITH ONLY ONE STANDARD CLAMP

TECON HETO Frame Wall Formwork is an universal and high efficient panel formwork system. It consists of S355 steel frame formwork panel, adjustable alignment clamp and panel strut ect.. It can be widely applied into medium to big size wall projects under crane assistance.

- Easy and simple connection via adjustable alignment clamp for all panel connections
- Small size H panel can be transported and assembled by hand
- Compact size in dimension saves cost and space in storage and transportation
- Fast formwork erection output on site with only four panel widths
- Long service life and easy to clean due to high-temperature powder coated or galvanized frame

MAIN COMPONENTS	Steel frame panel*, adjustable alignment clamp. <small>*: S355 profile, lined with complete piece of 12mm TECON-Form birch plywood.</small>
PANEL WEIGHT	35kg/sqm
MAX PANEL SIZE	1*3m
PANEL DEPTH	73mm
MAX ONE-TIME CASTING HEIGHT	6m
MAX PERMISSIBLE FRESH CONCRETE PRESSURE	60kN/sqm
APPLICATION	Residential & commercial buildings with big area walls, infrastructure projects and others.



ALUMI FRAME

FORMWORK

THE FASTEST ALUMINIUM FRAME PANELS FOR WALL WITHOUT CRANE ASSISTANCE

TECON Alumi Frame Wall Formwork is a labor-friendly and lightweight panel formwork system. It consists of 6061-T6 aluminum alloy frame formwork panel, adjustable alignment clamp and panel strut etc.. The portable panel and fast connection alignment clamp always improves site efficiency and reduces work burden in no-crane project site.

- Simple and easy handling with light weight panels and limited panel sizes where crane is not available
- Fast and firm connection with the adjustable alignment clamp, the only component for all panel connections
- Flexible use both horizontally and vertically with formwork panels
- Wide application with its inset tie points and extensive range of accessories in various projects



MAIN COMPONENTS	Aluminium frame panel*, adjustable alignment clamp. *6061-T6 aluminium alloy profile, lined with complete piece of 15mm TECON-Form birch plywood
PANEL WEIGHT	27kg/sqm
MAX PANEL SIZE	1*3m
PANEL DEPTH	117mm
MAX ONE-TIME CASTING HEIGHT	6m
MAX PERMISSIBLE FRESH CONCRETE PRESSURE	60kN/sqm
APPLICATION	Housing, commercial building, foundation, swimming pool and other civil engineering projects.



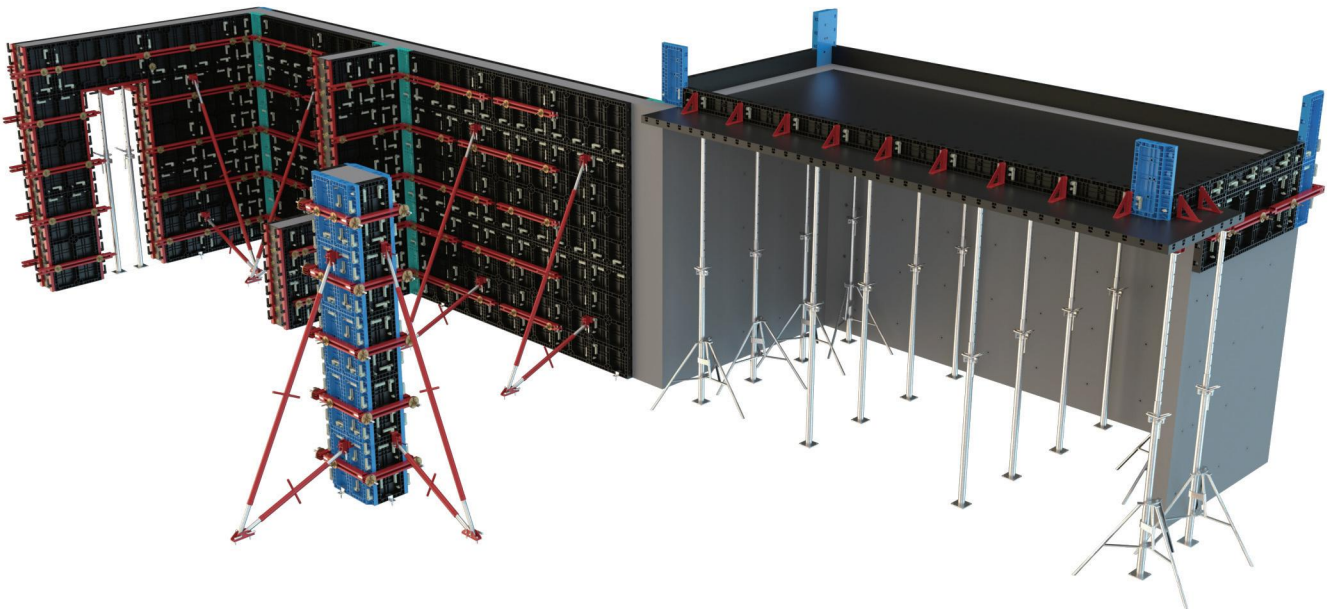
PLASTIC FORMWORK

TP60

THE LIGHTEST REUSABLE HAND-SET SYSTEM FORMWORK FOR WALL, COLUMN AND SLAB

TECON Plastic Formwork TP60 is recognized as the lightest formwork system due to its medium panel design and the application of ABS (Acrylonitrile Butadiene Styrene). It is mainly consisted of ABS plastic panel, erection handle, alignment waler, flex beam and shoring prop. Walls, columns, slabs can be quickly and efficiently formed even by unskilled workers.

- Fast and extremely easy as building blocks, assemble via erection handle, no skilled workers required
- Universal application in modular house with one pour for wall and slab together, can also cast wall, column and slab in sequence
- Light weight without crane assistance
- Easy cleaning, less or even no plastering after strip quick delivery due to ready to ship stock



MAIN COMPONENTS	Plastic panel*, erection handle, alignment waler, flex beam, shoring prop. *: ABS
PANEL WEIGHT	14kg/sqm
MAX PANEL SIZE	1.2*0.6m
MAX FRESH CONCRETE PRESSURE	60kN/sqm for wall, 80kN/sqm for column.
MAX CASTING SLAB THICKNESS	300mm
APPLICATION	Medium and small size residential and commercial buildings, basement, columns and modular houses and others, especially adapt to anti-corrosion needed project.

SLAB FLEX 20

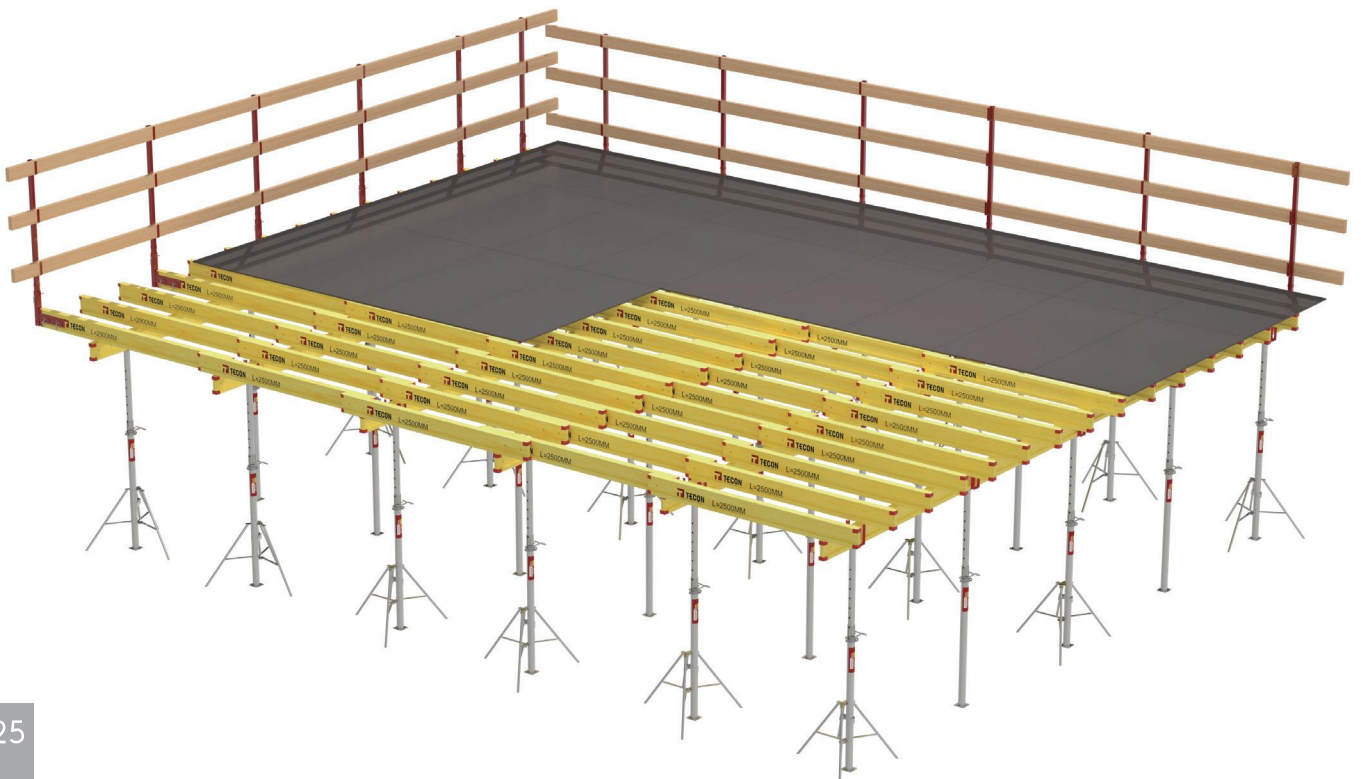
FORMWORK

FLEXIBLE TIMBER BEAM FORMWORK FOR ALL SLAB PLANS

TECON Slab Flex 20 formwork is the most ideal and flexible solution not only for normal slab project but also for the most complicated slab plan with drop beams or narrow corners. Slab Flex 20 consists of TECON-Form plywood, H20 timber beam, shoring props etc. which can be freely arranged on their position and space.

- Flexible, economic and ideal for all ground plans
- Efficient assembly by manual operation
- For all finishing requirements by free choice of shutters
- Easy transportation and storage with minimized space
- Can be applied to different beam shapes and sizes

MAIN COMPONENTS	18/21mm TECON-Form birch plywood, H20 timber beam, shoring prop.
STANDARD SHORING	Class D or E heavy duty prop (EN1065)
MAX PERMISSIBLE SLAB THICKNESS	1000mm
SIZE AND SHAPE	Can be customized to meet all requirements
EARLY DISMANTLED SYSTEM	Available
APPLICATION	Slab & beam in buildings, factories, tanks and fly-over roads, bridges.



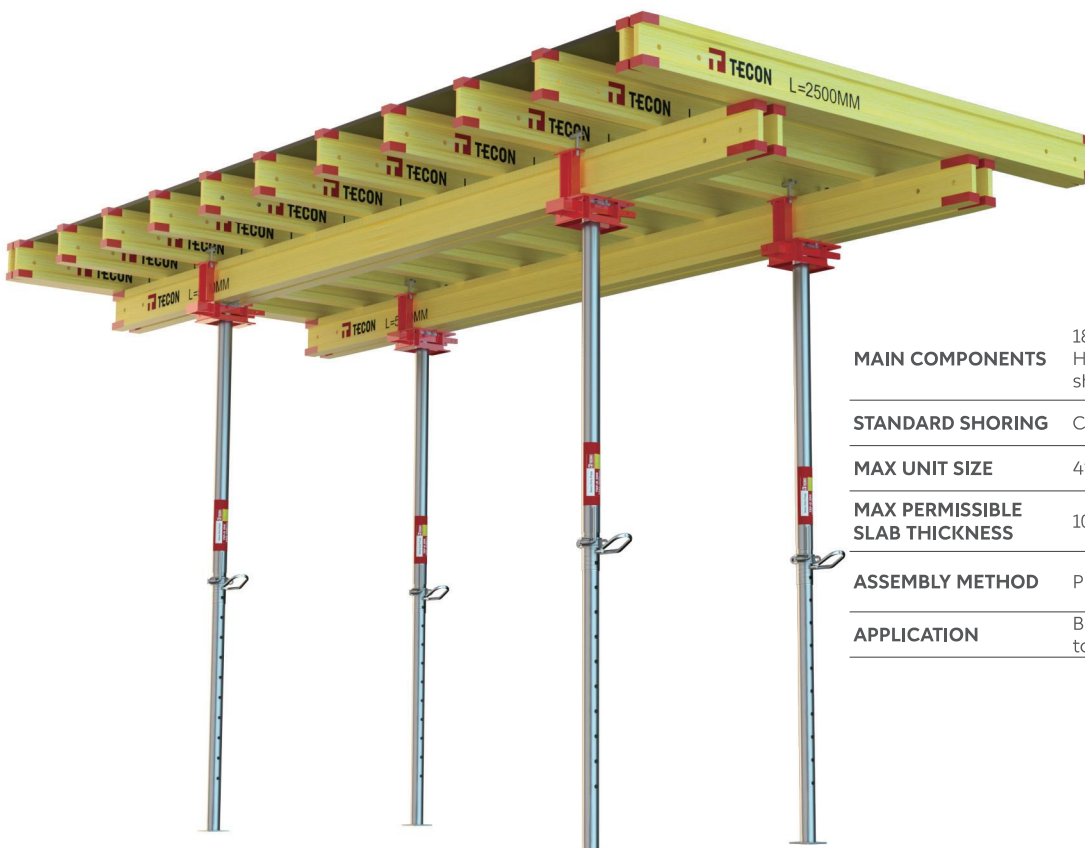


SLAB TABLE FORMWORK

HIGH EFFICIENT AND CUSTOMIZED TABLES FOR BIG AREA SLAB

TECON Slab Table Formwork is one of the most efficient slab shuttering solutions, especially for large area and multiple floors beamless structure. The system is consisted of TECON-Form plywood, H20 timber beam, table head, shoring prop etc. which can be pre-assembled into table unit on site. Big size Slab Table Formwork can be quickly moved into the next floor ready for pouring by crane lift.

- Big shuttering area tables increase site efficiency greatly
- Easy and fast to next position via trolley or tower crane
- Ready-to-use table units avoid repeated assembly and dismantle from every floor
- Fully compatible with other timber beam formwork with its H20 timber beam, plywood and steel props



MAIN COMPONENTS	18/21mm TECON-Form birch plywood, H20 timber beam, fixed table head, shoring prop.
STANDARD SHORING	Class D or E heavy duty prop (EN1065)
MAX UNIT SIZE	4*6m
MAX PERMISSIBLE SLAB THICKNESS	1000mm
ASSEMBLY METHOD	Pre-assembled at site
APPLICATION	Big area slab of buildings, factories, tanks, fly-over roads etc.

ALU-FLEX

FORMWORK

THE FASTEST ALUMINIUM FRAME PANELS FOR SLAB WITH DROP HEADS

TECON Alu-Flex Slab Formwork is one of the fastest early stripping decking system consists of 6061-T6 aluminium frame panel, early stripping head, truss bracing and shoring prop. Due to its portable panel and easy assembly sequence, workers can operate them efficiently without any crane assistance.

- Easy and fast operation by hand thanks to the light weight panel and easy assembly sequence
- Easy cleaning due to high-temperature powder coated frame
- Early stripping head reduces on-site material requirements and thus saves cost
- Wide application in various beamless slab project even for large area shuttering

MAIN COMPONENTS	Aluminium frame panel*, early stripping head, shoring prop. <i>*6061-T6 aluminium alloy profile, lined with complete piece of 10mm TECON-Form birch plywood</i>
PANEL WEIGHT	17.6kg/sqm
MAX PANEL SIZE	1.8*1.8m
PANEL DEPTH	142mm
MAX PERMISSIBLE SLAB THICKNESS	400mm with regular shoring support, 700mm with middle support
EARLY DISMANTLED SYSTEM	Yes
APPLICATION	Slab and beams of different kind of buildings such as houses and apartments.





ALUDECK FORMWORK

TECON Aludeck Slab Formwork is one of the most efficient and labour-saving decking system. It is consisted of 6061-T6 or 6082-T6 aluminium alloy frame panel, main beam, early stripping head and shoring prop. Assembly and slab forming can be implemented rapidly in residential and industrial construction projects with thicker slabs.

- Light weight aluminium panels and TMP multi-purpose aluminium props make it a high efficient handset decking system
- Easy to clean due to high-temperature powder coated frame
- Multi-purpose aluminium props TMP can be extended to double or triple heights with MRK truss brace as reinforcement
- Early stripping heads reduce onsite material requirements and result in quick deployment of panels
- High load capacity TMP Aluminum prop means lower density slab props required, around 0.3 pieces per m² only

MAIN COMPONENTS	Aluminium frame panel*, main beam, early stripping head, shoring prop. *: 6061-T6 or 6082-T6 aluminium alloy profile, lined with complete piece of 9mm TECON-Form birch plywood
PANEL WEIGHT	15kg/sqm
MAX PANEL SIZE	1.5*0.75m
PANEL DEPTH	120mm
MAX PERMISSIBLE SLAB THICKNESS	1000mm
EARLY DISMANTLED SYSTEM	Yes
APPLICATION	Slab of different kind of buildings such as houses and apartments.



ADJUSTABLE HETO FRAME COLUMN FORMWORK

TECON Adjustable HETO Frame Column Formwork is an adjustable column system that ensures high efficient assembly via crane assistance. It consists of S355 steel frame formwork panel, column clamp and panel strut ect.. Tens of column sizes can be easily formed by HM panels.

- Efficient assembly method and operations under crane assistance
- Adjustable HM panel can meet all rectangle column sizes by 50mm increment
- With the column clamp as the only component for all panel connections
- With complete set of platform kits as well as transporting wheels
- Easy clean due to high-temperature powder coated frame



MAIN COMPONENTS

Steel frame panel*, adjustable alignment clamp, column clamp.
*: S355 profile, lined with complete piece of 12mm TECON-Form birch plywood

PANEL WEIGHT 45kg/sqm

MAX PANEL SIZE 1*3m

PANEL DEPTH 73mm

MAX PERMISSIBLE FRESH CONCRETE PRESSURE 80kN/sqm

SIZE AND SHAPE Adjustable, 150*150mm-850*850mm rectangle columns with 4 pcs panels by 50mm increment
*: Formwork extensions can be added to apply to bigger column sizes

APPLICATION Various sizes columns in residential & commercial buildings, infrastructure projects etc..



ADJUSTABLE PLASTIC COLUMN FORMWORK

TECON Adjustable Plastic Column Formwork is the lightest and most labour-saving adjustable column formwork. Fast and easy erection makes it excelent in realizing 66 column sizes by only 2 types adjustable panels.

- **Efficient installation due to lightweight plastic column panels and erection handles without crane assistance**
- **66 types of column sizes are available through only 2 types adjustable panels.**
- **Fast and extremely easy to assemble with only a few accessories, no skilled workers required.**

MAIN COMPONENTS	Adjustable plastic panel*, erection handle. *: ABS
PANEL WEIGHT	14kg/sqm
MAX PERMISSIBLE FRESH CONCRETE PRESSURE	80kN/sqm
SIZE AND SHAPE	Adjustable, can meet column sizes from 150*150mm to 650*650mm by 50mm modulus



ROUND COLUMN

FORMWORK

TECON Round Column Formwork consists of plastic round column and steel round column in different diameters. Plastic round column formwork is the lightest and economic column formwork with diameter ranges from 300mm to 450mm with 50mm as increment. Steel round column formwork can be customized in bigger diameters at any size.

- The fastest way to make round columns whatever its plastic or steel
- Easy stacking with each other during transport and storage
- Easy and quick assembly by simply rotating the handles or fasten the bolts
- Plastic round column formwork can be assembled by hand while steel round column formwork need crane assistance

— Plastic Round Column Formwork TP60 —



MAIN COMPONENTS	Round plastic panel*, erection handle. <i>*: PP & Fiber glass</i>
MATERIAL	PP & Fiber glass
MAX PERMISSIBLE FRESH CONCRETE PRESSURE	80kN/sqm
SIZE AND SHAPE	300mm, 350mm, 400mm, 450mm Diameter Columns Available

— Steel Round Column Formwork —

MAIN COMPONENTS	Round steel panel*, bolts & nuts. <i>*: S235, 4mm shuttering, 6mm rib.</i>
SIZE AND SHAPE	Can be customized to meet all diameters
MAX PERMISSIBLE FRESH CONCRETE PRESSURE	80kN/sqm

SINGLE SIDE WALL FORMWORK SSF

UPTO 8M HEIGHT FOR SINGLE SIDE WALL WITH ONLY ONE POUR

TECON Single Side Formwork SSF is a standard formwork supporting bracket system for both building construction and civil engineering. Combined with TECON wall formwork, it is specially designed to transfer fresh concrete pressure to support frame and concrete foundation without any tie rod pulling through the wall.

- Standard frame brackets can be assembled simply and efficiently with crane assistance
- Both standard and customized supporting frame heights are available
- Adapt to different fresh concrete pressure by the different spacing of frames
- Can be moved by workforce via its cast wheels
- Fully compatible with all TECON wall formwork system

MAIN COMPONENTS	Single side bracket, formwork, anchor system.
STANDARD BRACKET HEIGHT	4m/2.2m/1.5m
FORMWORK TYPE	BASE 20 Wall Formwork or HETO Frame Wall Formwork or Alumi Frame Wall Formwork or Heavy Duty Steel Formwork
MAX ONE-TIME CASTING HEIGHT	8.5m
APPLICATION	Single side wall of metro station, basement, etc..



CLIMBING FORMWORK

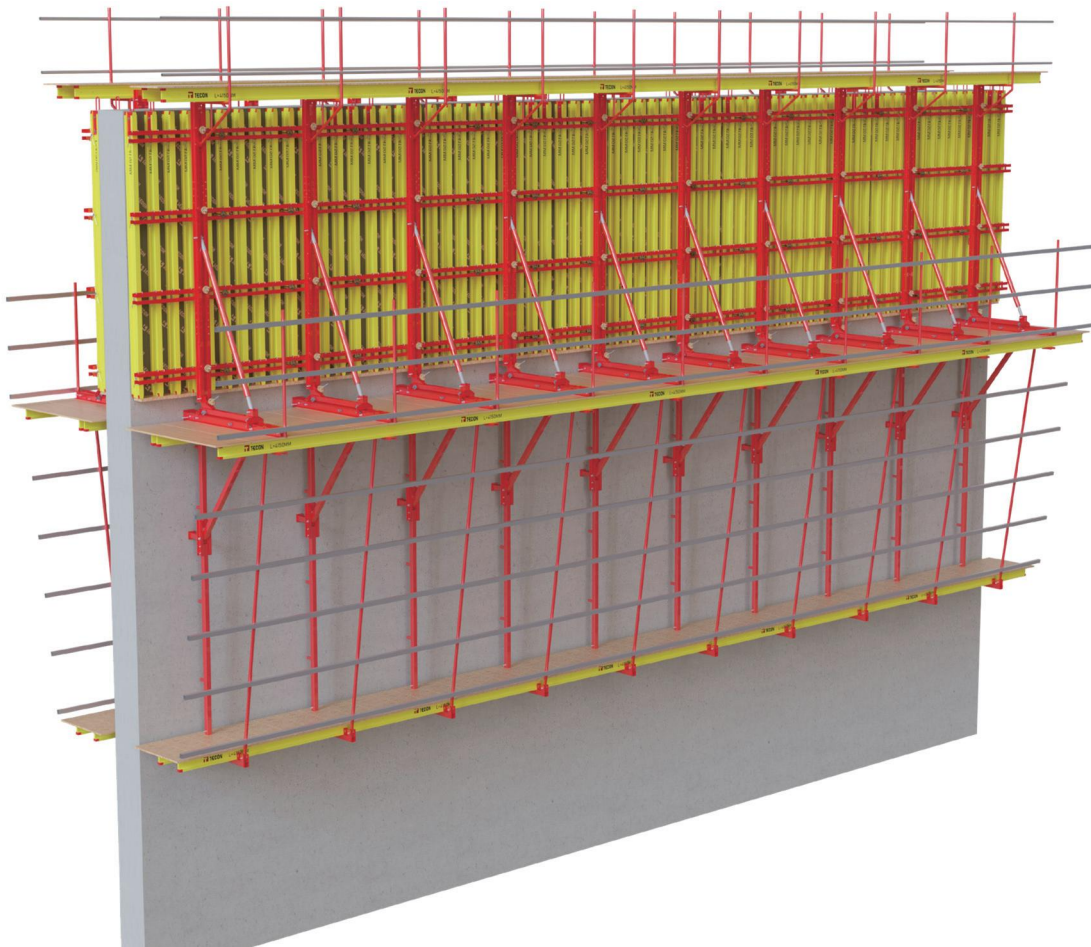
CB180/240

TECON Climbing Formwork CB180 & CB240 is a crane lifted climbing system. The climbing unit consists of formwork panel, climbing bracket, shaft platform beam and anchoring system. It can jump to the next pouring height for the core wall or external wall with the assistance of tower crane, and provides safe working platform for both formwork panel and site workers.

- Time-saving moving procedure of the complete set to reach the next pouring height with only one crane lift
- Offer speedy pouring cycle for the vertical structure
- Provides 3 platforms for more convenient and efficient work
- Compatible with TECON wall formwork system such as TECON Base 20 Wall Formwork HETO Frame Wall formwork and others

- Reliable and high safety operation condition thanks to the anchor system

MAIN COMPONENTS	Climbing bracket, formwork, anchor system.
PLATFORM NUMBER	3 floors
PLATFORM WIDTH	1800mm or 2400mm
FORMWORK TYPE	BASE 20 Wall Formwork or Heavy Duty Steel Formwork
MAX ONE-TIME CASTING HEIGHT	6m
APPLICATION	Core wall of high-rise building, bridge pier, LNG tank, power plant, etc..

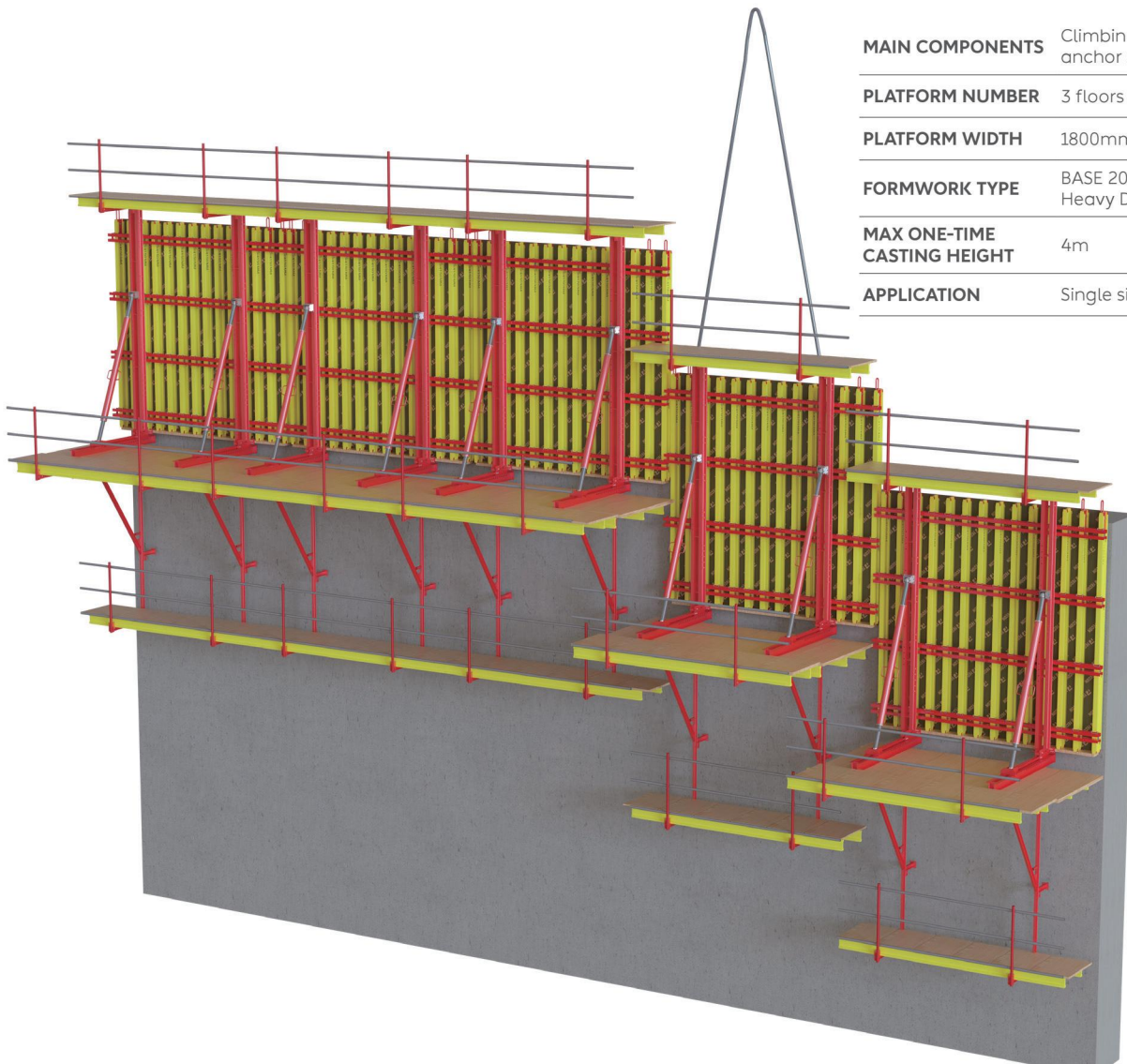


DAM FORMWORK

DB180/240

TECON Dam Formwork DB180 & DB240 is used for forming one-side concrete structure. It has high reliability and bearing capacity for mass concrete structures without tie rods to pull through. It is widely used for in dams, river power stations or navigation locks.

- Can produce both single side inclined wall and double side inclined wall
- Shorten crane time due to one unit design of dam formwork
- Can be compatible with all TECON wall formwork system
- High load capacity without tie rod to pull through concrete structure
- Reliable anchorage system and muscular bracket strength ensure the highest on-site safety



MAIN COMPONENTS	Climbing bracket, formwork, anchor system.
PLATFORM NUMBER	3 floors
PLATFORM WIDTH	1800mm or 2400mm
FORMWORK TYPE	BASE 20 Wall Formwork or Heavy Duty Steel Formwork
MAX ONE-TIME CASTING HEIGHT	4m
APPLICATION	Single side core wall, dam, etc..

MULTI-FUNCTION

CLIMBING FORMWORK MB180

TECON Multi-function Climbing Formwork MB180, is an advanced version of jump formwork with higher safety guarantee. It is also an economical version of self-climbing formwork with mobile hydraulic cylinder. Therefore, it can go up via both crane and hydraulic cylinder.

- Rail-guided bracket with climbing shoe maximizes the site safety
- Anti-falling hooks on the rail of bracket prevent possible accident of free drop, so every lift is safe even in windy area
- Save crane time greatly by adding hydraulic cylinders and climbing kits to make them climb automatically
- Each set of bracket and formwork will always go up through the climbing shoe fixed on the structure, which restricts big movement from the air

MAIN COMPONENTS	Climbing bracket, formwork, anchor system, mobile hydraulic station.
PLATFORM NUMBER	4 floors
PLATFORM WIDTH	2300mm
FORMWORK TYPE	BASE 20 Wall Formwork or Heavy Duty Steel Formwork
MAX ONE-TIME CASTING HEIGHT	4.5m
APPLICATION	Core wall of high-rise building, bridge pylon, tank, power plant, etc..

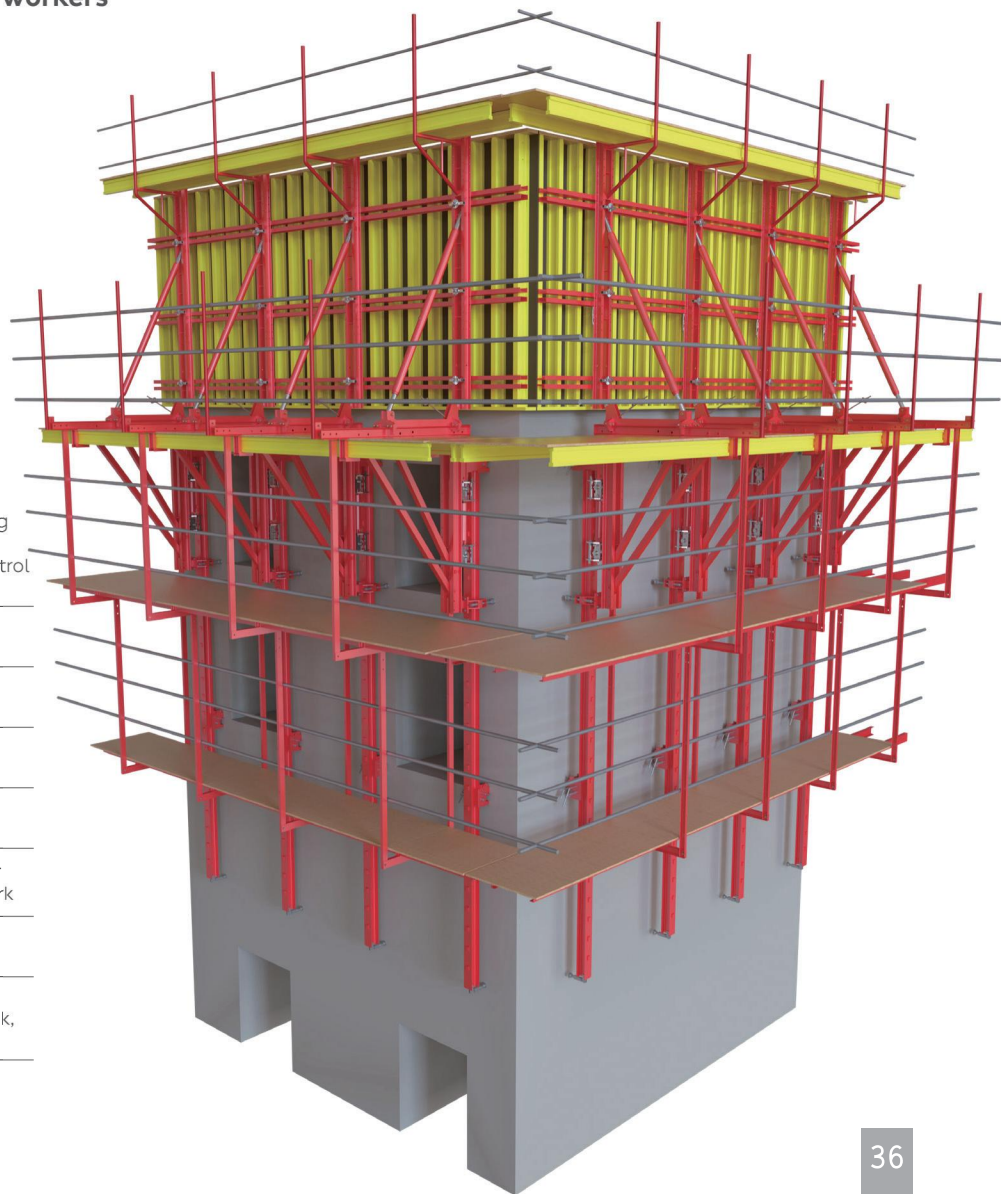




SELF-CLIMBING FORMWORK TSC50 & TSC100

TECON Self-climbing Formwork TSC50 & TSC100 is a crane independent climbing system lifted by hydraulic cylinders. It offers efficient and cost saving concreting solution for high-rise building, bridge pylons etc.. Up to 100kN lifting capacity and reliable embedded anchorage system ensures stable and safe automatic climbing with integrated formwork together.

- Efficient automatic climbing and easy operation, thus without occupying tower crane schedule
- Safe and fully sealed operation platform regardless weather influence
- Multi-Platforms design allow workers operating on different level
- Reliable climbing bracket and the embedded anchorage system proven by lots project sites
- Can be shifted from one project to another despite of different geometry



MAIN COMPONENTS	Climbing bracket, climbing profile, formwork, anchor system, hydraulic and control system.
PLATFORM NUMBER	4 or 5 floors
PLATFORM WIDTH	2400mm & 2800mm
CLIMBING DEVICE	Hydraulic cylinder
CLIMBING SPEED	30 min/floor
FORMWORK TYPE	BASE 20 Wall Formwork or Heavy Duty Steel Formwork
MAX ONE-TIME CASTING HEIGHT	6m
APPLICATION	Core wall of high-rise building, bridge pylon, tank, etc..

SELF-CLIMBING PROTECTION SCREEN

TECON Self-Climbing Protection Screen SCPS is a modular designed facade protection system which can climb automatically via your high rise building by mobile hydraulic cylinder. It provides a maximum of three floors coverage with optional numbers of the platform. Therefore, it guarantees a safe, efficient and weather-shielded working space for your site crews in high position.

- Independent self-climbing system saves crane usage during the whole construction phase

- Customized storey heights and platform numbers meet different projects requirement

- Universal utilization among different projects

- Embedded anchor system ensures firm attaching to the concrete structure

- Full sealed facade protection ensures the safe operation condition of site crews

MAIN COMPONENTS	Climbing bracket, anchor system, mobile hydraulic station.
NUMBER OF FLOOR COVERED	2.5-3.5 floors
STANDARD UNIT SIZE	7m with 2 pcs brackets
PLATFORM WIDTH	1000mm
CLIMBING DEVICE	Hydraulic cylinder
CLIMBING SPEED	25 min/floor/unit
APPLICATION	Façade protection and work platform for high rise building with regular shape layout





SELF-CLIMBING PLATFORM SCP

TECON Self-climbing Platform SCP is a fully sealed climbing facade operation platform which can be lifted by electric hoist. The platform provides high efficient and safe working conditions for high-rise project construction.

- High-efficient self-climbing platform system lifted by electric hoist with smart remote control
- Double embedding anchorage and anti-falling climbing shoe ensures operation safety
- Multiple utilizing in structural concreting, plastering, painting and others
- Full sealed facade protection ensures the safe operation condition of site crews
- Adapt to different geometry plans and floor heights via customized planning

MAIN COMPONENTS	Climbing bracket, anchor system, electric hoist, electronic control system.
NUMBER OF FLOOR COVERED	4.5 floors
STANDARD BRACKET DISTANCE	5m
LOADING QUANTITY* *: Secondary platform excluded	600mm
CLIMBING DEVICE	Electric hoist
CLIMBING SPEED	30 min/floor
APPLICATION	Façade protection and work platform for high rise building.



H20 TIMBER BEAM

TECON H20 Timber Beam is made from spruce imported from Northern Europe which ensures its high bearing capacity. H20 timber beam is widely used in girder-based formwork systems, such as shear wall formwork, slab formwork, column formwork and others.

- Universal application in various project sites as girders

- Yellow waterproof painting for prolonged service life

- Plastic cap as protection reduces damage and increases service life

- Spruce grown in extremely cold regions ensures high bearing capacity of timber beam flange

- Follows EN13377 standards

FLANGE	Imported solid wood spruce from North Europe
WEB	Poplar core plywood
GLUE	WBP glue
WEIGHT	around 4.5kg/m
AVAILABLE LENGTH(M)	1.5,1.9,2.45,2.75,2.90,3.00,3.30,3.60,3.90,4.50,4.90, 5.90 etc. or customized
WOOD MOISTURE	12% +/- 4% at delivery
PACKAGE UNITS	105 pieces per pallet



ALUMINIUM BEAM

TECON Aluminium Beam is developed in different sections and heights, they can be used as primary and secondary beams during forming construction. High strength and light weight makes the aluminium beam more and more popular for different projects.

- Long life service and lightweight
- Higher strength-to-weight ratio than steel and wood
- Wood or rubber filler ensures compatibility with plywood
- Multiple applications in most formwork system



TECON-FORM SHUTTERING

TECON-Form Film Faced Plywood is a series of strong, flat and waterproof panels for construction site shuttering purpose. They have a wide range from poplar, hardwood to birch and birch x-life with different veneer material, film, glue and manufacturing process. TECON-Form Film Faced Plywood is widely used in various formwork systems, from conventional formwork to H2O timber beam formwork as well as panel formwork etc..

Tecon-Form Plastic Board offers a smooth concrete surface and the most cost-saving solution for any shuttering activities, especially when you calculate the average cost into per time use. They can be applied to all wall, column and slab shuttering projects.

THICKNESS 12/15/18/21mm for plywood, 15/18/21mm for WPC board

MAIN SIZE 1220*2440MM, or customized

USE TIMES Poplar ply 4-10times, hardwood ply 8-15 times, birch ply 15-30 times; WPC board 30-50 times

LOGO TECON or Customized



SHORING PROPS

TECON Shoring props cover the full range of props as floor support, fabricated on different load capacity, adjustable height and different raw material basis.

- Heavy Duty Steel Prop following EN1065 standard

- Acrow Prop following AS3610 standard

- Light Duty Prop

- Spanish Prop

- Italian Prop

- We have also developed our mould and design to produce aluminium props at a maximum height of 6250mm. They are compatible with some European formwork brands, including MP prop.

STEEL PROP	HEIGHT	2.5/3.0/3.5/4.0/4.5/5.0/5.5m, for heavy duty prop 1.83/2.8/3.4/3.94/4.9m, for Acrow prop
	TUBE THICKNESS	76/63mm, 60/48mm
	STANDARD	AS3610, SGS
	WORK LOAD	20kN, 30kN

ALUMINIUM PROP	HEIGHT	1.2/2.5/3.5/4.8/6.25m
	WEIGHT	10.4/15.5/18.7/23.8/30.2KG
	WORK LOAD	79kN, Max 56kN

Acrow Prop



Heavy Duty Steel Prop



Light Duty Prop



Aluminium Prop



RINGLOCK

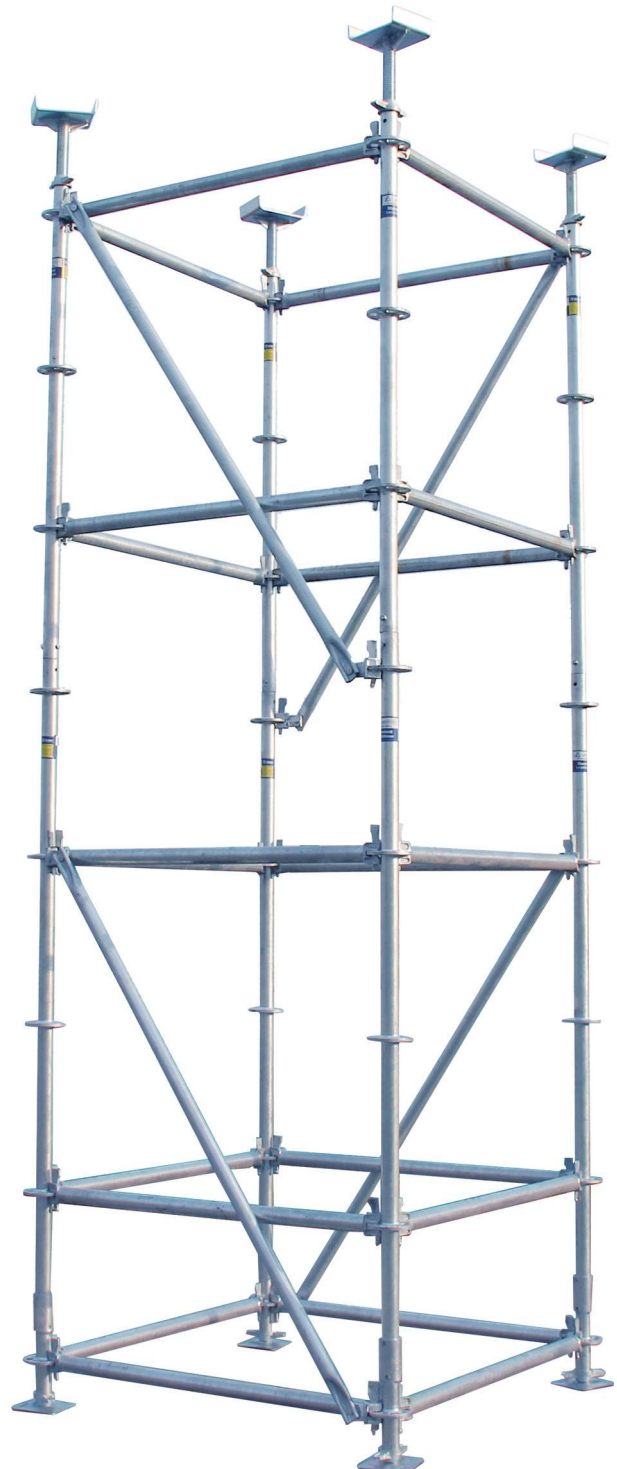
SCAFFOLDING

TECON Ringlock Scaffolding is designed and manufactured as the most convenient and efficient scaffolding system. It only consists of a few user-friendly components such as standard, ledger, diagonal brace, screw jack etc..

It can be used as a shoring system, facade platform, and work access for both the construction site and the industrial field.

- Quick erection and dismantling with only a hammer
- Safety and stability due to rigid wedge connections without loosening
- Durability and less maintenance due to high strength steel and hot-dip galvanizing finishing
- It can be used as an access tower with stairs inside to the site at the height
- It can be used as shoring support to meet heavy load requirements
- It can be used as a façade platform for site crew protection and a working platform at the height

MAIN COMPONENTS	Standard*, ledger, diagonal, U head jack, base jack, stair, steel plank. <small>*: S355, Dia.48mmx3.25mm.</small>
MAX HEIGHT	24m
ASSEMBLY EFFICIENCY	60cbm/day/person
LOADING QUANTITY	12-18t/20GP, 22-27t/40HQ.
APPLICATION	Slab & beam support, façade protection, working platform.



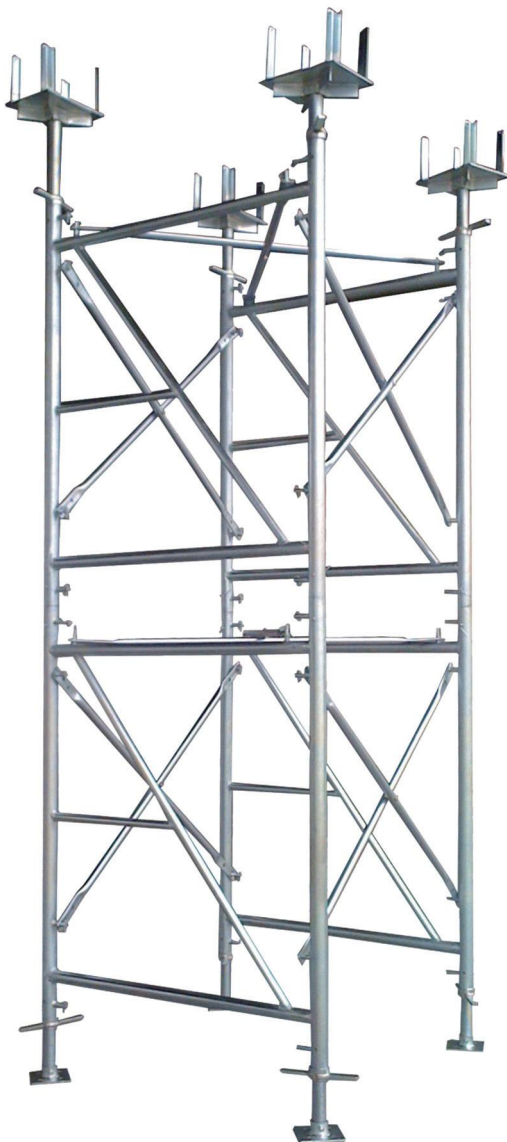


SHORING TOWER

TST60

THE FASTEST FRAME SHORING SYSTEM FOR GREAT HEIGHTS AND HEAVY LOADS

TECON Shoring Tower TST60 is the most cost-effective as well as high efficient supporting system in formwork construction. TST60 is consisted of main frame, diagonal brace, U head jack and base jack ect.. It is specially developed for high shoring and heavy load projects, and it is widely used in bridges, subways, buildings, and other civil engineering projects.



- Fast and user friendly in assembly with very few elements
- High load-bearing capacity with less materials
- Can meet different shoring requirements by only two frame heights and adjustable jacks
- Hot-dip galvanized surface treatment for the mainframe offers more than ten years service life
- Offers bigger bearing capacity and higher shoring for various kind of shuttering including TECON Slab Flex 20 and Slab Table formwork

MAIN COMPONENTS	Main frame*, diagonal brace, U head jack, base jack. *: S355, Dia.60mmx3mm.
STANDARD COMPONENT SIZE	Main frame: 1.5*1.6m, 1.5*1.1m, 1.2*1.6m, 1.2*1.1m. Diagonal brace: 1.5*1.0m, 1.2*1.0m, 1.0*1.0m. Head jack & base jack: H=1.05m.
BEARING CAPACITY	60kN for per leg up to 10m
ASSEMBLY EFFICIENCY	160cbm/day/person
LOADING QUANTITY	Around 13t/40HQ
APPLICATION	Slab & beam support at big height and heavy load, bridge support.

TECON PROJECT CASES

In the past decade, we have helped more than 500 clients in building their projects all over the world.



BOSNIA AND HERZEGOVINA-BRIDGE PROJECT





SRI LANKA-
ONE
COLOMBO

SINGAPORE- QUEENS PEAK



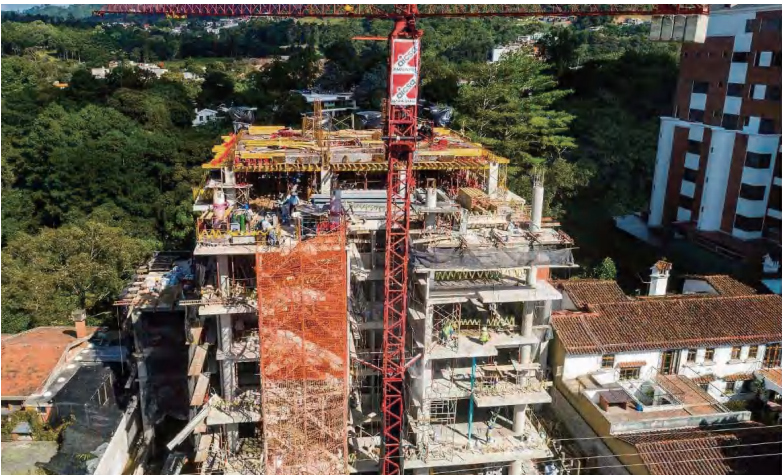


INDONESIA - POWER HOUSE POSO EXTENSION





PHILIPPINES-
SHERATON HOTEL



GUATEMALA-
APARTMENT
PROJECT



U.S.A-SEA SHORE VILLA



CAMBODIA-OLYMPIA CITY





DUBAI-ALPHA DATA TOWER





URUGUAY- HOTEL SOLERIOS





CHILE- FARELLÓN NORTE

Farellón Norte considers 280 departments of social integration for families in Chile, which is a high-rise project located in a privileged and consolidated sector to the north of the city, with high-end finishes apartments. The apartment building will exceed 20 floors and will have high standard common spaces.

ARGENTINA- LINE OCAMPO



Line Ocampo is located in the heart of Barrio Parque, the best area in Buenos Aires, with an investment of USD 130 million. The project is expected to become the most unique building in the capital.

It has nine floors, three basements and a total of 117 units, covering an area of approximately 53,000 square meters.

It has an indoor and outdoor swimming pool, a micro cinema, two 700 square meters of integrated activity rooms, a gym, a spa, children's rooms and car charging in each parking lot.



URUGUAY- CRUCEROS III

Cruceros III is located in Montevideo, Uruguay. On the Sea of Playa Mansa, a Building of the highest category and design as Cruceros I and II, with its own land independent of those, of more than 4,200 m².

Spacious apartments with 2 bedrooms, main en suite and 2 bathrooms, and 1 and a half bedrooms. All apartments with front terrace, own barbecue and individual electric underfloor heating per room.



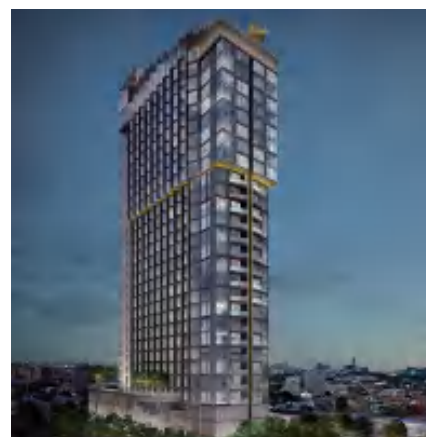


THAILAND - XT PHAYATHAI



THAILAND- CHOENGMON TOWNHOUSE

THAILAND-EDGE CENTRAL PATTAYA





HONDURAS- APARTAMENTOS VILLA FIRENZE



URUGUAY-COMMERCIAL BUILDING



Block A, Building 2, LEFO Commercial center, Wuzhong District,
Suzhou, Jiangsu Province, China

info@teconform.com

0086-(0)512-65650586 0086-(0)512-65654586

www.teconform.com